

FIXED PRICED TURN-KEY PACKAGE

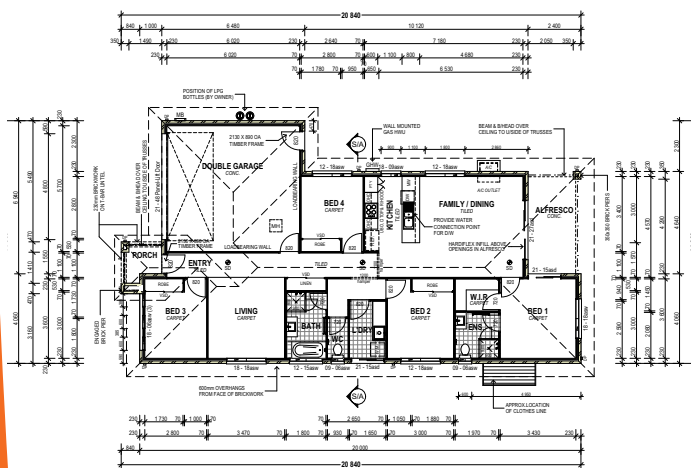
\$479,000 | Size of Home 187m²

Lot 712 Potters Lane Raymond Terrace 578m²



Photos are indicative only

Disclaimer: These are artists impressions only to reflect the facade design, please refer to the contract and specifications for house features and finishes. Colours shown are for illustrative purposes only, please refer to the Colour Selection Options in your contract.



FIXED PRICED TURN-KEY INCLUSIONS

- All Council requirements
- All site costs-no hidden extras
- Stainless Steel Kitchen Appliances
- Blinds
- Carpet and Tiles
- Downlights
- Ceiling Fans
- Air Conditioning
- Covered Alfresco
- Fully fenced,turfed and landscaped
- Clothesline and Letterbox
- Termite Protection
- Driveway

The house will be completely finished inside and out.

Carnelian PROJECTS

HELPING YOU BUILD YOUR NEW HOME
FOR FURTHER INFORMATION CALL
Kerri-Ann | 0402 107 194