

# HUNTER HOMES

live WITH HEART 

LOT 511, Sailors Way  
**RAYMOND TERRACE, NSW**

Land 565m<sup>2</sup>

**\$504,288\***

## BOWMAN ALT FACADE

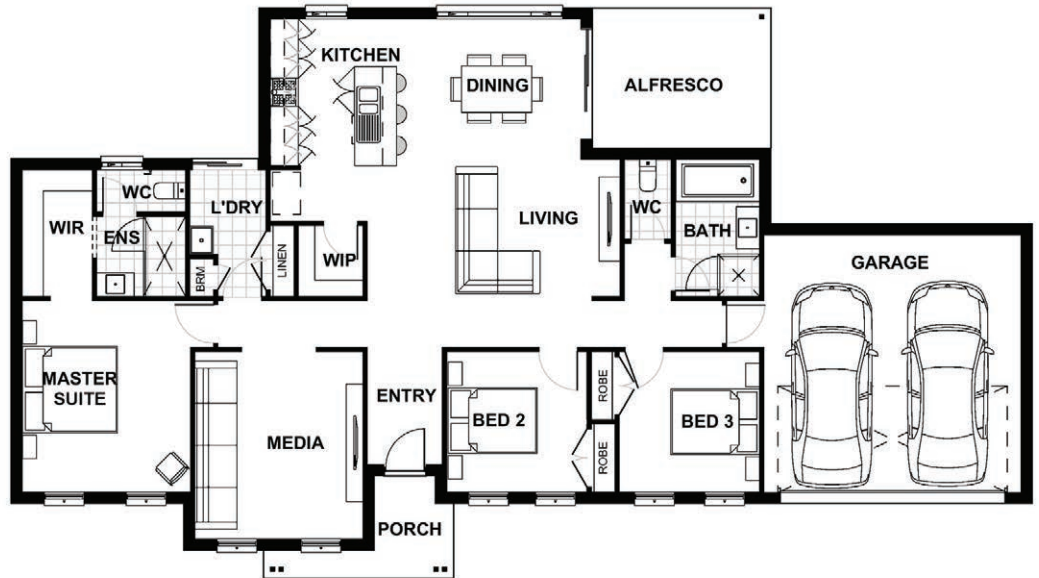
 3  2  2

Total (sqs.)	21.1	Width (m)	21.83
Total (m <sup>2</sup> )	196	Length (m)	12.18

Contact **Brooke Davidson**  
0448 293 239 [brooke@hunterhomesnsw.com](mailto:brooke@hunterhomesnsw.com)

### Features & Inclusions

- ✓ Carpet and Tiles throughout
- ✓ Driveway, Patio & Alfresco
- Concrete
- ✓ Ducted Air Conditioning
- ✓ 20mm Stone Bench Tops
- ✓ 900mm Stainless Steel Appliances
- ✓ Clothesline + Letterbox
- ✓ Colorbond Roof
- ✓ 3 Coat Paint System
- ✓ Downlights
- ✓ Standard Site costs & BASIX
- ✓ Local Builder/ Local Trades



**Terms and Conditions:** Images shown on this brochure are approximate and for illustration purposes only, these plans may not be drawn to scale. Façades and other images on this brochure may be shown as optional upgrades or not included, additional fixtures and finishes that are featured on this document may not be included in the base cost such as landscaping, tiling, decking, furniture, feature lighting, pools, driveways etc. Land estate pricing is subject to the developers guidelines. Hunter Homes reserves the right to change plans and inclusions at any time. This package is subject to council approval. All designs that are developed remain the property of Hunter Homes Pty Ltd under copyright law & we retain & claim all rights to these plans. Changing plans by 50% or more does not avoid legal responsibility for a copyright breach.

**1300 BUY HOME** [www.hunterhomesnsw.com](http://www.hunterhomesnsw.com)

**POTTER'S LANE**  
RAYMOND TERRACE

House and Land - Patterson 196